

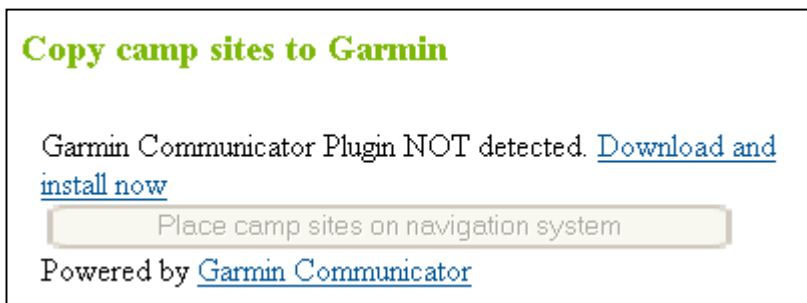
User Manual for uploading GPS coordinates for Garmin navigation systems:

Step-by-step instructions:

1. Ensure that you have shown in the 'Preferences' tab that you have a Garmin navigation system and connect your navigation system to your computer using the USB cable supplied.
2. Select a set of coordinates that you want to upload onto your navigation system in the 'GPS coordinates' tab and click on 'Save', or search the group of camp sites that you want to save via the search options and selection criteria on the website, then click on the 'Save results on the navigation system' button and follow the instructions.
3. The text below will appear on your screen. Click on the 'Place camp sites on navigation system' button.



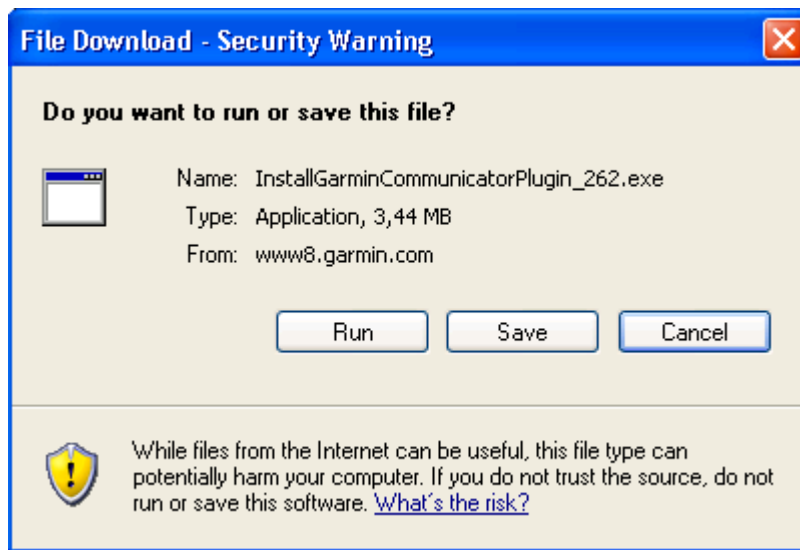
4. The first time you do this you will be asked to download the software from Garmin (see illustration below). Click on 'Download and install now', or go to the: <http://www8.garmin.com/products/communicator/> website.



5. You will be taken to the Garmin website shown below. Click on the 'Download' button.



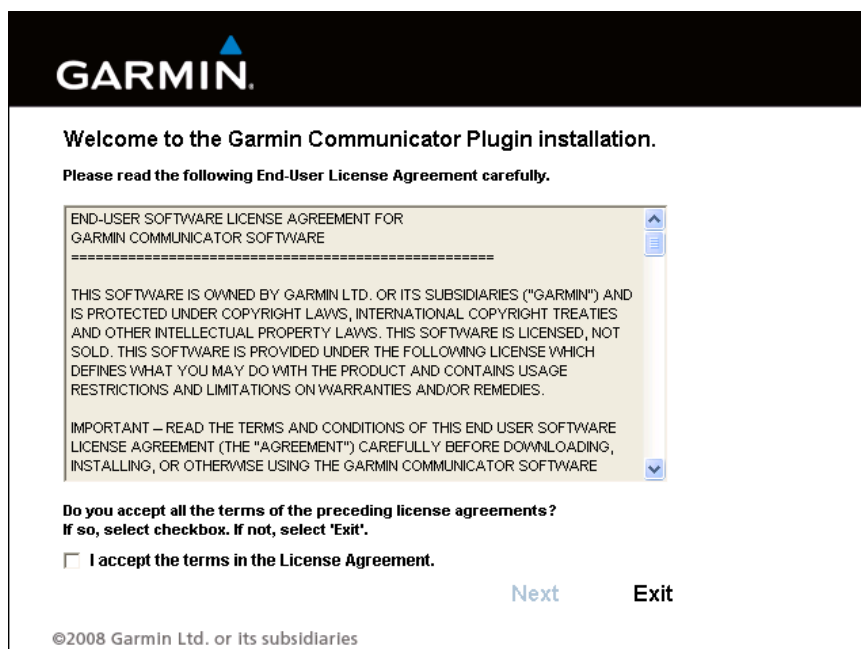
6. The following window will be displayed. Click on 'Run'.



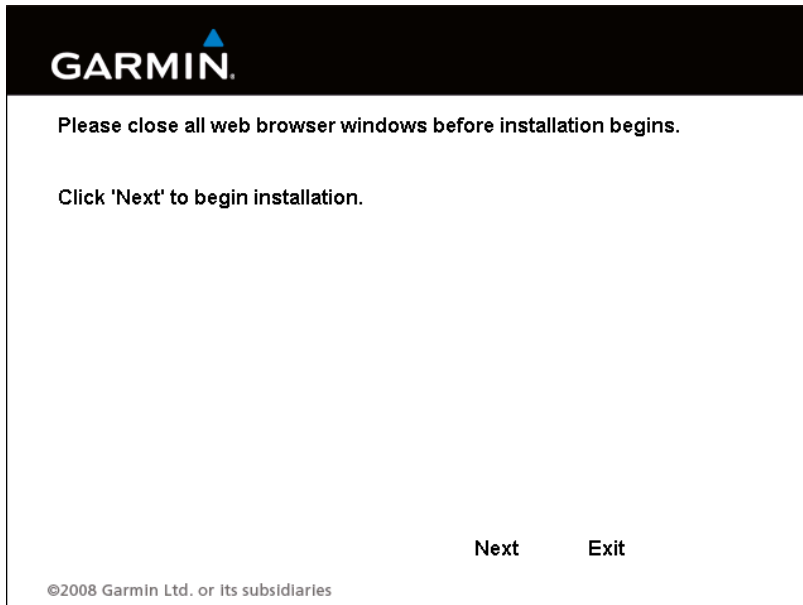
7. In the following window click once again on 'Run'.



8. The conditions will be displayed in the following window. If you accept them tick the box and click on 'Next'.



9. You will then be requested in the following window to close down all open web browser windows before beginning installation. Close all web browser windows and click on 'Next'.



10. The following window will appear. This means that the installation has been successful. Click on 'Done'.



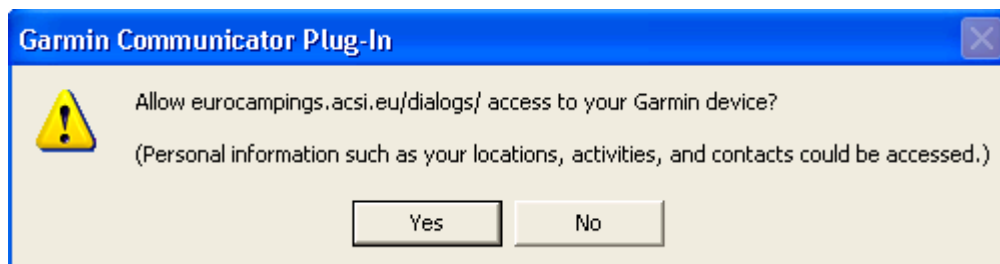
11. A test will be made to see if the software is correctly installed and whether the navigation is properly connected to the computer. If this is the case the following window will be displayed:



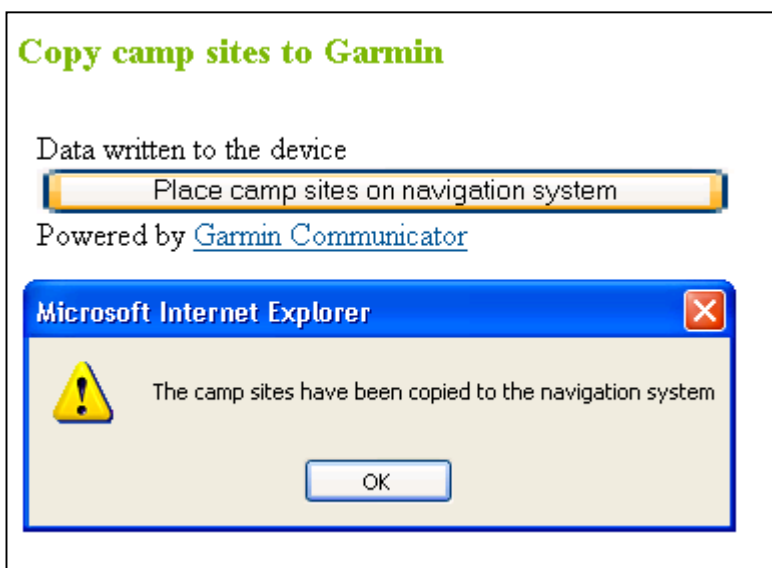
12. Now that the software is correctly installed you can go back to 'My ACSI' and upload the coordinates onto your navigation system. In the window below click on the 'Place camp sites on navigation system' button.



13. The following security window may appear. If so, click on 'Yes'.



14. The GPS coordinates will then be automatically copied to your navigation system. When this is completed the following screen will appear. Click on 'OK'.



15. The details have now been copied to your navigation system. Disconnect the navigation system from your computer. Don't forget first to click on the icon below to ensure that the system can be safely be disconnected. You can then remove the cable from the apparatus.

