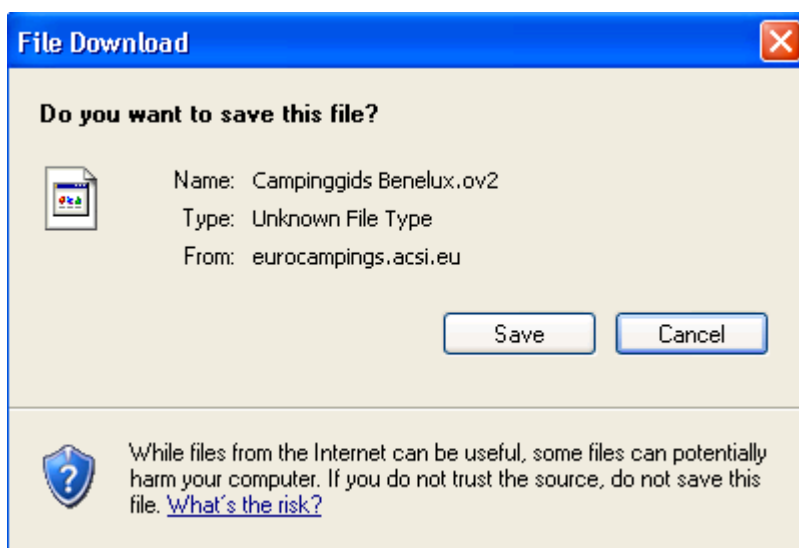


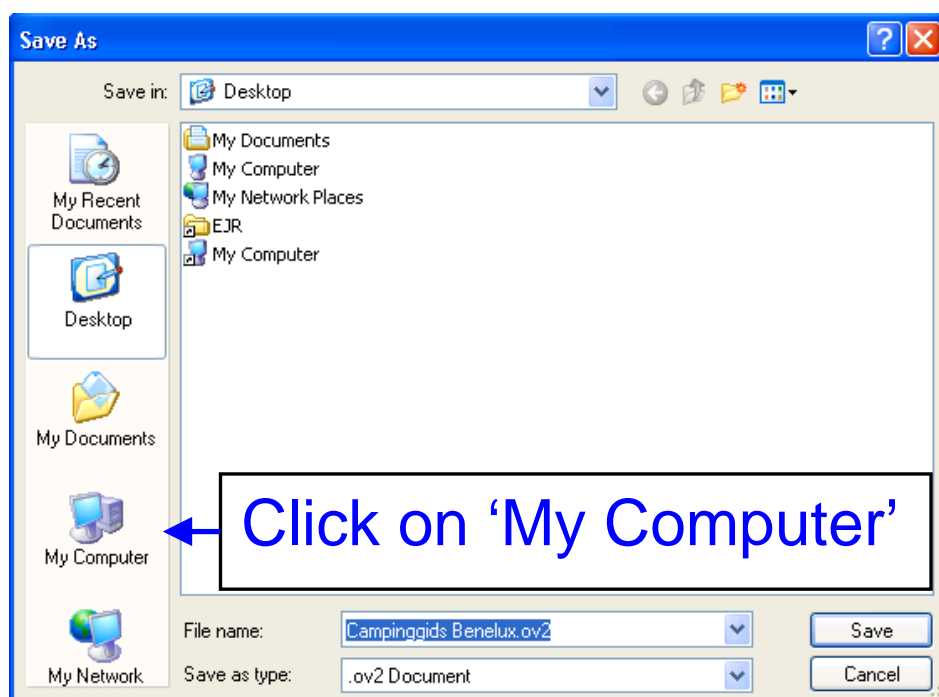
User Manual for uploading GPS coordinates for TomTom navigation systems:

Step-by-step instructions:

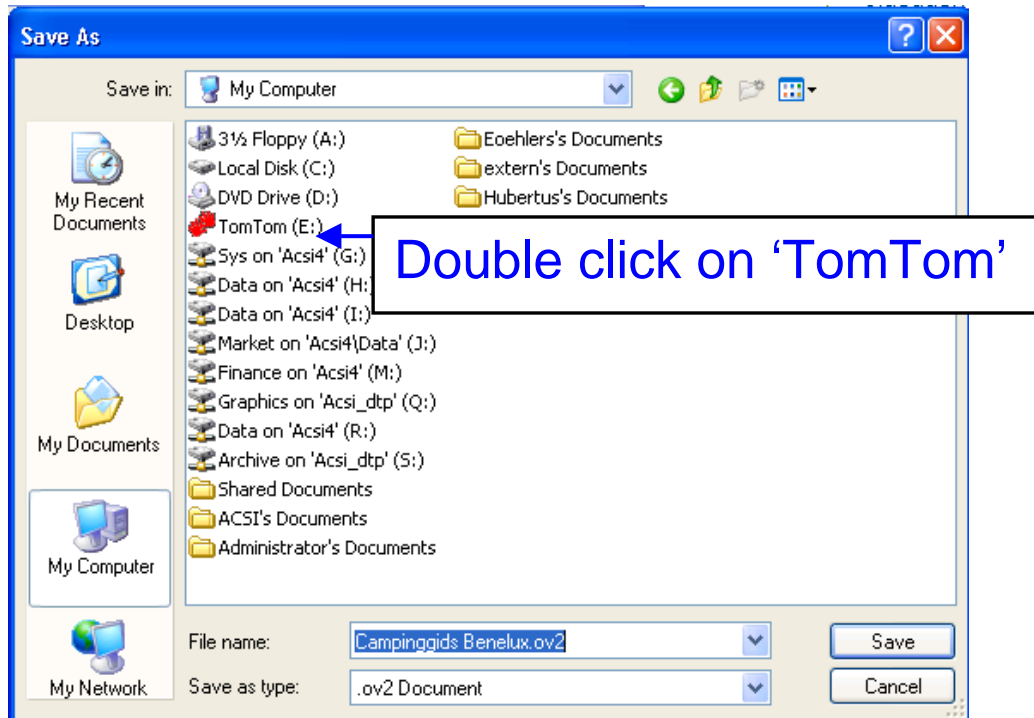
1. Ensure that you have shown in the 'Preferences' tab that you have a TomTom navigation system and connect your navigation system to your computer using the USB cable supplied.
2. Select a set of coordinates that you want to upload onto your navigation system in the 'GPS coordinates' tab and click on 'Save', or search the group of camp sites that you want to save via the search options and selection criteria on the website, then click on the 'Save results on the navigation system' button and follow the instructions.
3. The window below will appear on your screen. Click on 'Save'.



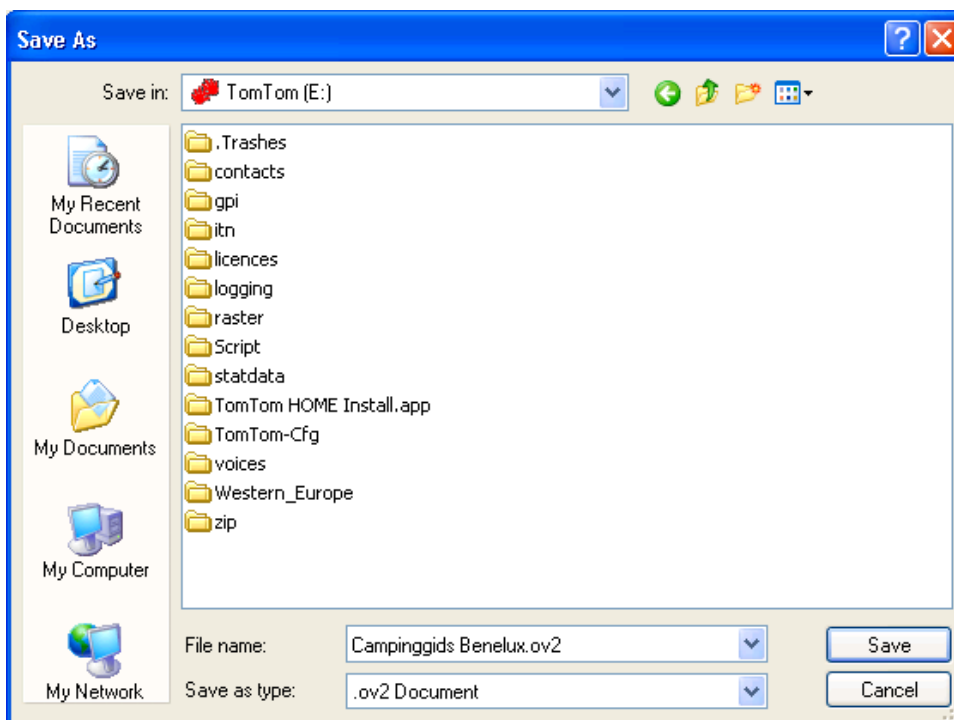
4. The following window will then appear. Click on 'My Computer'.



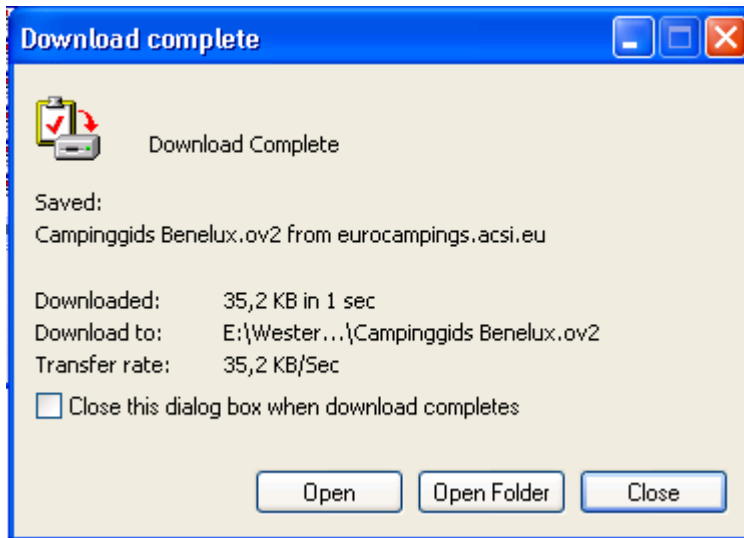
- When you click on 'My Computer' the following window will appear. Select the location that was created when you connected your navigation system. If this does not appear in the list you can click on F5 to refresh the window. In the example shown the location is 'TomTom (E)'. Double click on this location.



- A window will then appear showing all the folders that are available on your navigation system. Select the folder with the maps that you use. In the example shown below this is the 'Western_Europe' folder.



7. All the other POI files in your navigation system are contained in this folder. You can save this new file here by clicking on 'Save'. The window below will appear when it has been saved. Then click on 'Close'.



8. Disconnect the navigation system from your computer. Don't forget first to click on the icon below to ensure that the system can be safely be disconnected. You can then remove the cable from the apparatus.



9. The camp sites are now stored in 'Favourite locations' on your navigation system. You can recognise them by name of the saved file or by the name you gave the file yourself when you saved it. Consult your navigation system's user manual for more information about navigating to 'Favourite locations'.